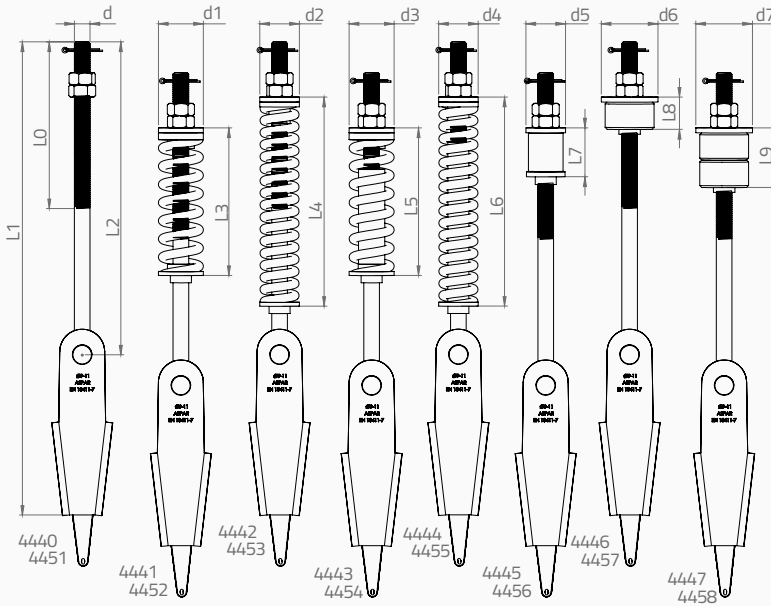
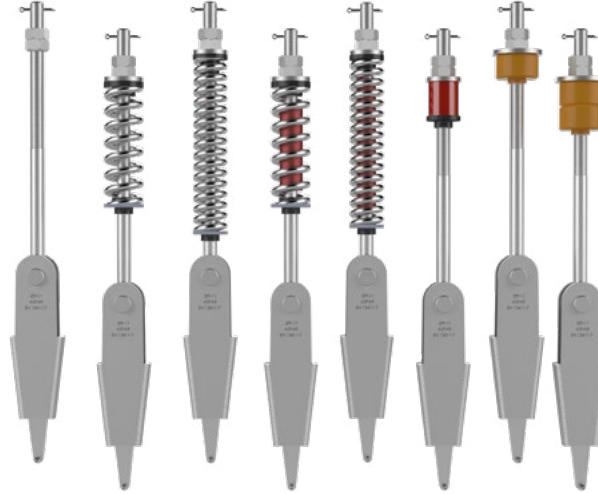


# Ø9-11 mm HALAT ŞİŞESİ | ROPE ATTACHMENT

EN13411-7



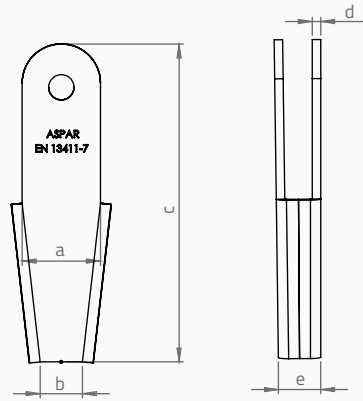
TÜM METAL YÜZEYLER GALVANİZ KAPLANMIŞTIR  
ALL SURFACE ARE GALVANIZED

TÜM HALAT ŞİŞELERİ HALAT KOPMA YÜKÜ (74 kN)  
TESTLERİNDEN BAŞARI İLE GEÇMİŞTİR  
ALL THE ROPE ATTACHMENTS PASSED THE ROPE BREAKING FORCE  
(74kN) TESTS SUCCESSFULLY.

KOD/CODE	L0	L1	L2	L3	L4	L5	L6	L7	L8	L9	d	d1	d2	d3	d4	d5	d6	d7
4440	170	484	320								M16							
4441	170	484	320	151							M16	46						
4442	170	484	320		214						M16		41					
4443	170	484	320			151					M16			46				
4444	170	484	320				214				M16				41			
4445	170	484	320					50			M16					41		
4446	170	484	320						33		M16						58	
4447	170	484	320							61	M16							58
4451	450	764	600								M16							
4452	450	764	600	151							M16	46						
4453	450	764	600		214						M16		41					
4454	450	764	600			151					M16			46				
4455	450	764	600				214				M16				41			
4456	450	764	600					50			M16					41		
4457	450	764	600						33		M16						58	
4458	450	764	600							61	M16							58

EN13411-7

Ø9-11 mm  
GÖVDE | BODY

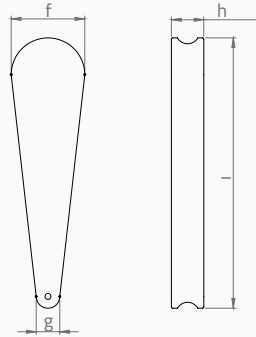


MALZEME | MATERIAL  
SAC GÖVDE | SHEETIRON

a	b	c	d	e
48	26	190	6	27

EN13411-7

Ø9-11 mm  
KAMA | WEDGE

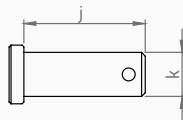


MALZEME | MATERIAL  
PIK DÖKÜM | CASTIRON  
EN-GJMW-400-5  
EN-GJL-200

f	g	h	i
32	10	14	117

EN13411-7

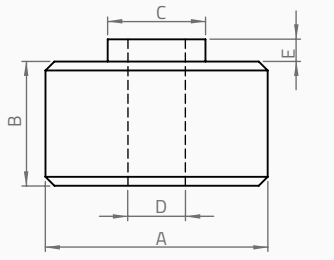
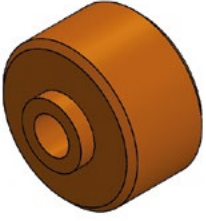
Ø9-11 mm  
PİM | PIN



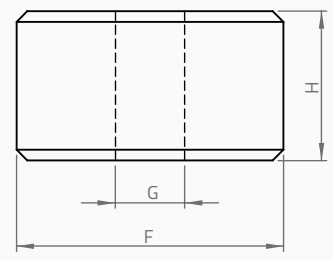
MALZEME | MATERIAL  
METAL | ROUND METAL BAR  
10083 - 1 C 35 E

j	k
45	Ø16

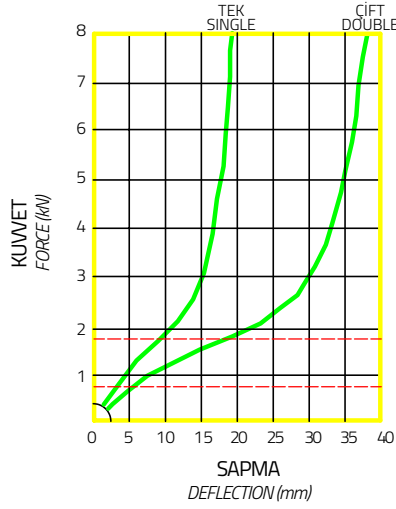
Ø9-11 mm  
**POLIÜRETAN LASTİK | POLYURETHANE CABLE BUFFER**



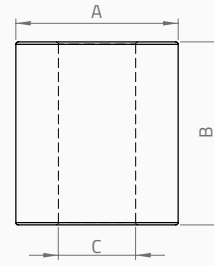
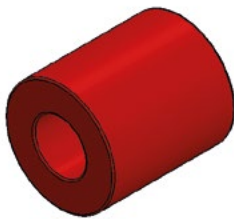
TİP   TYPE	A	B	C	D	E
L8 - L9	50	28	22	13	5



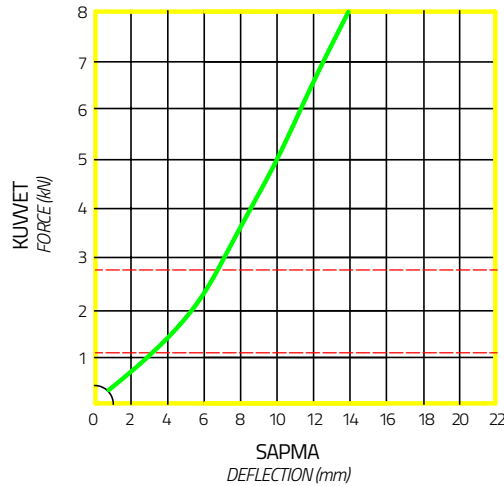
TİP   TYPE	F	G	H
L8 - L9	50	13	28



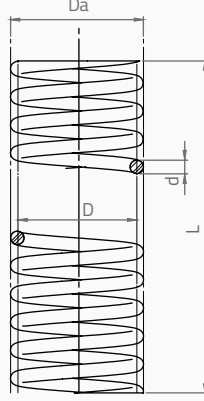
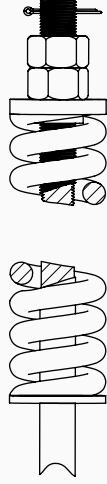
Ø9-11 mm  
**PVC LASTİK | PVC CABLE BUFFER**



TİP   TYPE	A	B	C
L7	35,5	40	17



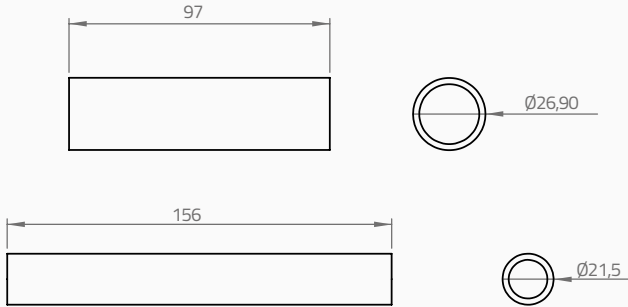
## Ø9-11 mm YAY | SPRING



MALZEME | MATERIAL  
DIN 17223 B - EN 10270B

TİP TYPE	DIŞ ÇAP OUTER DIAMETER	MERKEZ ÇAPI MID THREAD DIAMETER	TEL ÇAPI DIAMETER SPRING WIRE	BOY UNSTRESSED LENGHT	KUVVET ELESTIC FORCE	STROK RANGE OF SPRING	YAY SABİTİ SPRING RATE CONSTANT
	mm	mm	mm	mm	N	mm	N/mm
	Da	D	d	L	F	L1	k
L3	46	37	9	135	4990	30	165,53
L4	40	31	9	200	5139	38	130,62

## Ø9-11 mm YAY BORUSU | SPRING STOPPER



MALZEME | MATERIAL  
METAL | METAL

## KOLİ BİLGİLERİ | PACKING MEASURE

ÜRÜN ADI PRODUCT DESCRIPTION	KOLİDEKİ ADET QUANTITY IN PACKAGE (pcs)	EN WIDTH (cm)	BOY LENGTH (cm)	YÜKSEKLİK HEIGHT (cm)	AĞIRLIK WEIGHT (kg)
Ø9-11 HALAT ŞİŞESİ Ø9-11 ROPE ATTACHMENT	10	21	50	14	16

Ø9-11 mm  
4441 | 4443 | 4452 | 4454



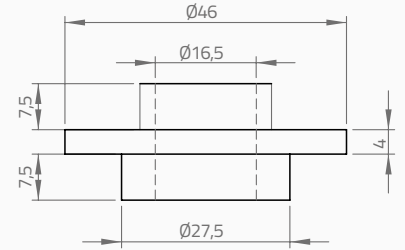
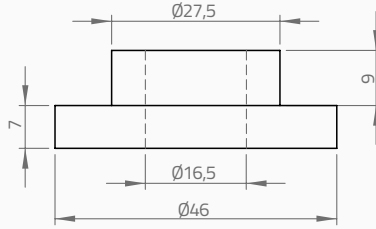
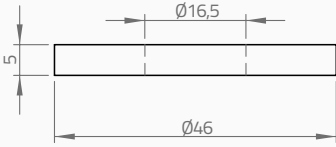
METAL  
SHEET IRON



POLYAMİD  
POLYAMIDE



KAUÇUK  
RUBBER



Ø9-11 mm  
4442 | 4444 | 4453 | 4455



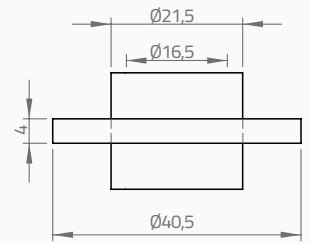
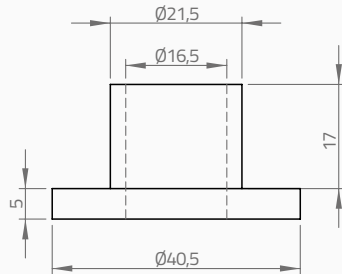
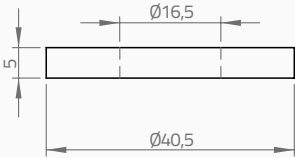
METAL  
SHEET IRON



POLYAMİD  
POLYAMIDE



KAUÇUK  
RUBBER



Ø9-11 mm  
4445 | 4456



METAL  
SHEET IRON



POLYAMİD  
POLYAMIDE



METAL  
SHEET IRON

Ø9-11 mm  
4446 | 4447 | 4457 | 4458

